

est 1979

Jeremy
Leaf & Co.



Hurley Court, 953 High Road, North Finchley

£2,400 Per Month

- Luxury fitted bathroom with bath & shower
- 2 double bedrooms with fitted wardrobes
- Council Tax Band E
- Open plan lounge/ kitchen
- En-suite shower room
- Undercroft parking
- Underfloor heating & Comfort Cooling
- Second floor with Lift

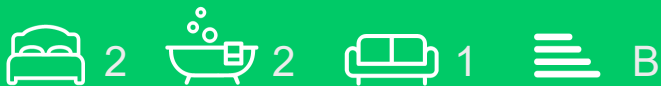
863 High Road, London, N12 8PT
020 8446 4295

property@jeremyleaf.co.uk
<https://www.jeremyleaf.co.uk/>

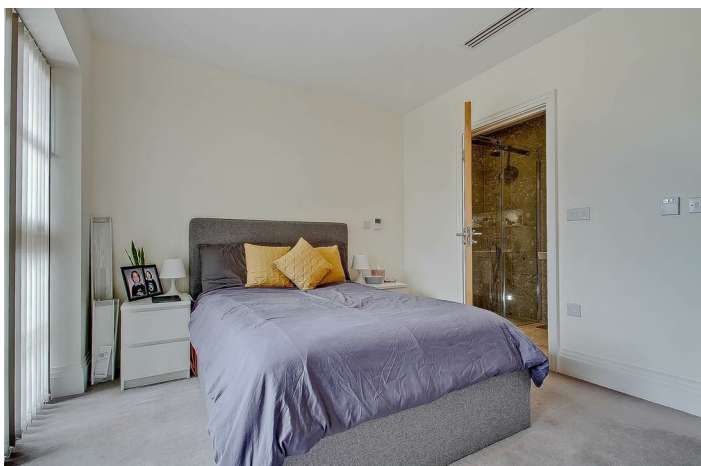
Hurley Court, 953 High Road, North Finchley, N12

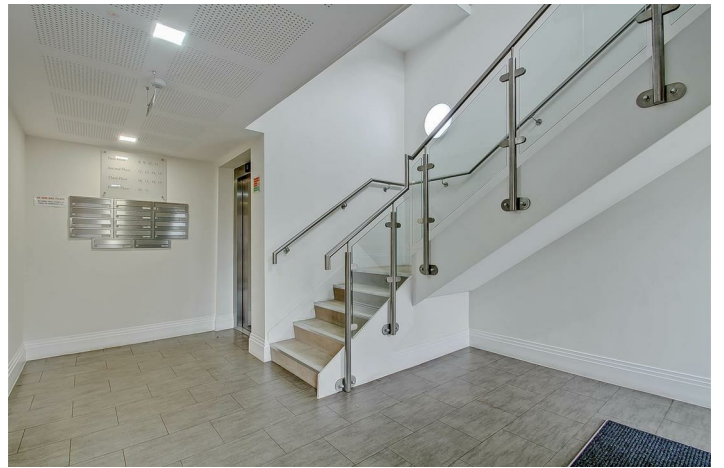
8FA

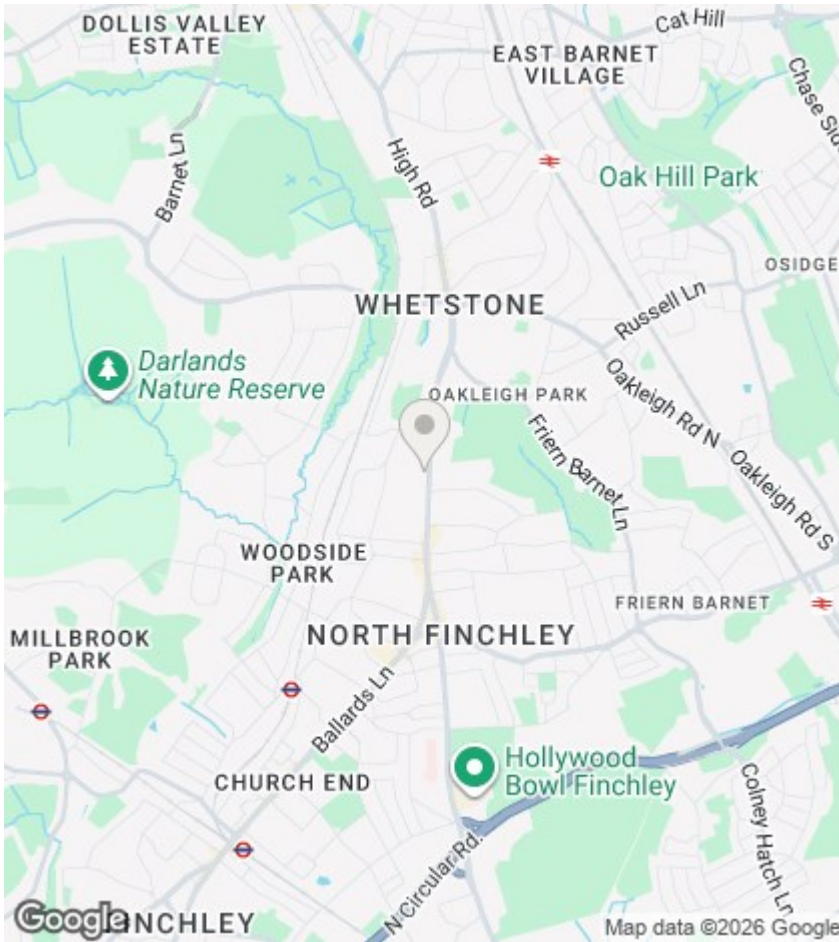
A two double bedroom/two bathroom second floor apartment in this gated development constructed by Berkeley Homes. The property has been finished to a high standard throughout with Villeroy & Boch sanitaryware, Handsgrohe fittings & German fitted kitchen with integrated Siemens appliances. The property also benefits from underfloor heating, comfort cooling and secure undercroft parking. Conveniently located just over 1/2 mile from Woodside Park tube station. Viewing advised.



Council Tax Band: D







Directions

Viewings

Viewings by arrangement only. Call 020 8446 4295 to make an appointment.

EPC Rating:

B

Energy Efficiency Rating		Current	Potential
Very energy efficient - lower running costs			
(92 plus) A			
(81-91) B		85	85
(69-80) C			
(55-68) D			
(39-54) E			
(21-38) F			
(1-20) G			
Not energy efficient - higher running costs			
England & Wales		EU Directive 2002/91/EC	